



USAID
FROM THE AMERICAN PEOPLE

RESILIENCE ANCHORS

USAID RESILIENCE ANCHORS FACTSHEET

OVERVIEW

Zimbabwe is a USAID “Resilience Focus” country. Its local natural resource management systems present a unique opportunity to build a comprehensive resilience approach (which investigates how people and nature can best manage in the face of disturbances) to support communities near protected zones and associated wildlife corridors. Protected areas like the Mid-Zambezi Valley, Save Valley Conservancy, and Gonarezhou National Park are considered “resilience anchors” to allow for multifaceted approaches to reduce people’s chronic vulnerability to climatic shocks and economic challenges. These “resilience anchors” can provide economic opportunities for communities while conserving their natural resources.



PROJECT GOAL

To increase the capacity of communities to sustainably protect and manage their natural resources and the wildlife economy (based on the conviction that nature is an economic asset), in anticipation of future shocks and stresses, through the implementation of a range of strategic interventions.

Resilience ANCHORS works with Zimbabwean organizations and the private sector to achieve this goal.

THEORY OF CHANGE

“If community-level stakeholders (i.e., local authorities, nongovernmental actors, and the private sector) and communities around wildlife and protected areas in Zimbabwe are empowered to work together and to hold each other accountable for better natural resources management (NRM), conservation efforts, and economic benefit, then vulnerable communities will increase their resilience to economic and climate-related shocks.”

PROJECT OBJECTIVES

Objective 1: To improve economic benefits from strengthened community-level management and oversight of conservation enterprises.

Objective 2: To increase sustainable access to quality water of sufficient quantity and quality to meet human, economic, and ecosystem needs.

Objective 3: To strengthen locally-led development and private-sector engagement.

STRATEGIC PROJECT INTERVENTIONS

Our activities revolve around the following interventions:

- a. Participatory Land Use Planning and Management
- b. Community Conservancies
- c. Capacity-building for Improved Local Natural Resource Management
- d. Livelihood Diversification and Strengthening (through Conservation Enterprises)
- e. Non-Timber Forest Product Value Chains and Commercialization
- f. Community-Private Sector Partnerships
- g. Climate-Smart Agriculture
- h. Local Integrated Water Resource Management
- i. Human-Wildlife Conflict (HWC) Mitigation / Human-Wildlife Coexistence

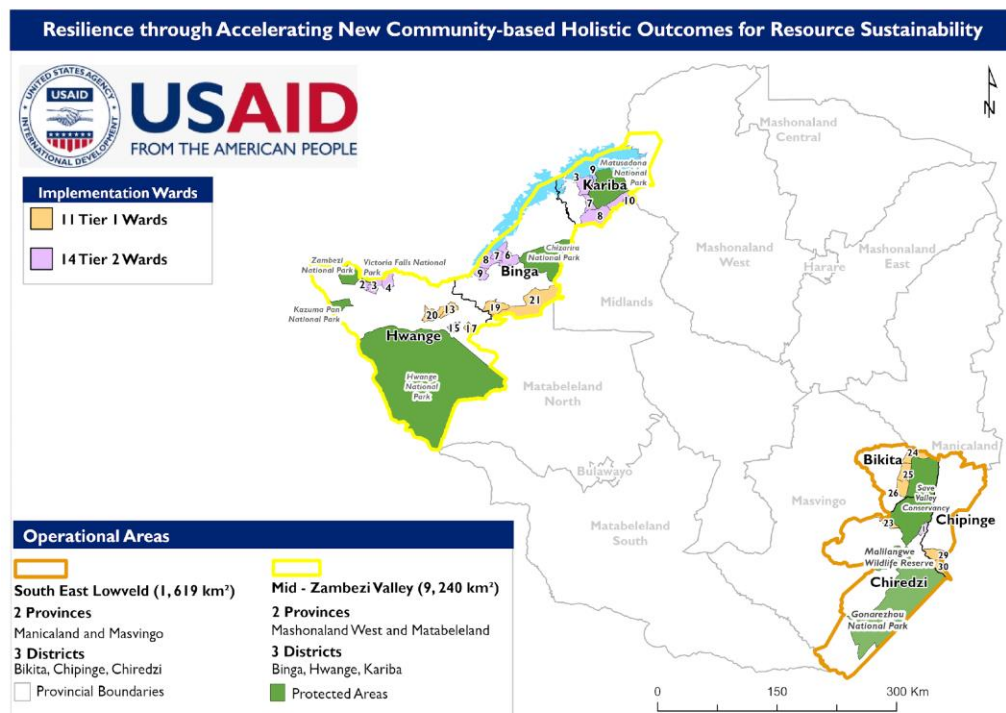
EMBEDDED PRINCIPLES

Key principles embedded across all activities implemented include:

Locally Led Development – We promote active participation and involvement of local communities, relevant local government institutions, the private sector, and local NGOs/CBOs in all our activities.

Inclusion of Women and Youth – Our activities are socially inclusive and ensure the engagement and empowerment of all marginalized groups.

Private Sector Engagement—Private sector players are engaged as catalysts and partners to expand the scale, impact, and sustainability of our activities.



CONTACT INFORMATION

Jeremy Swanson

Chief of Party

Email: jswanson@ecodit.com or ra-info@ecodit.com

For more information, visit <https://www.usaid.gov/zimbabwe>