



USAID
FROM THE AMERICAN PEOPLE

Property Rights and Artisanal Diamond Development (PRADD)

**USAID's Project to Support the
Kimberley Process**

Tim Fella

Land Tenure and Conflict Adviser

USAID



USAID
FROM THE AMERICAN PEOPLE



Context, Objectives and Approach of PRADD

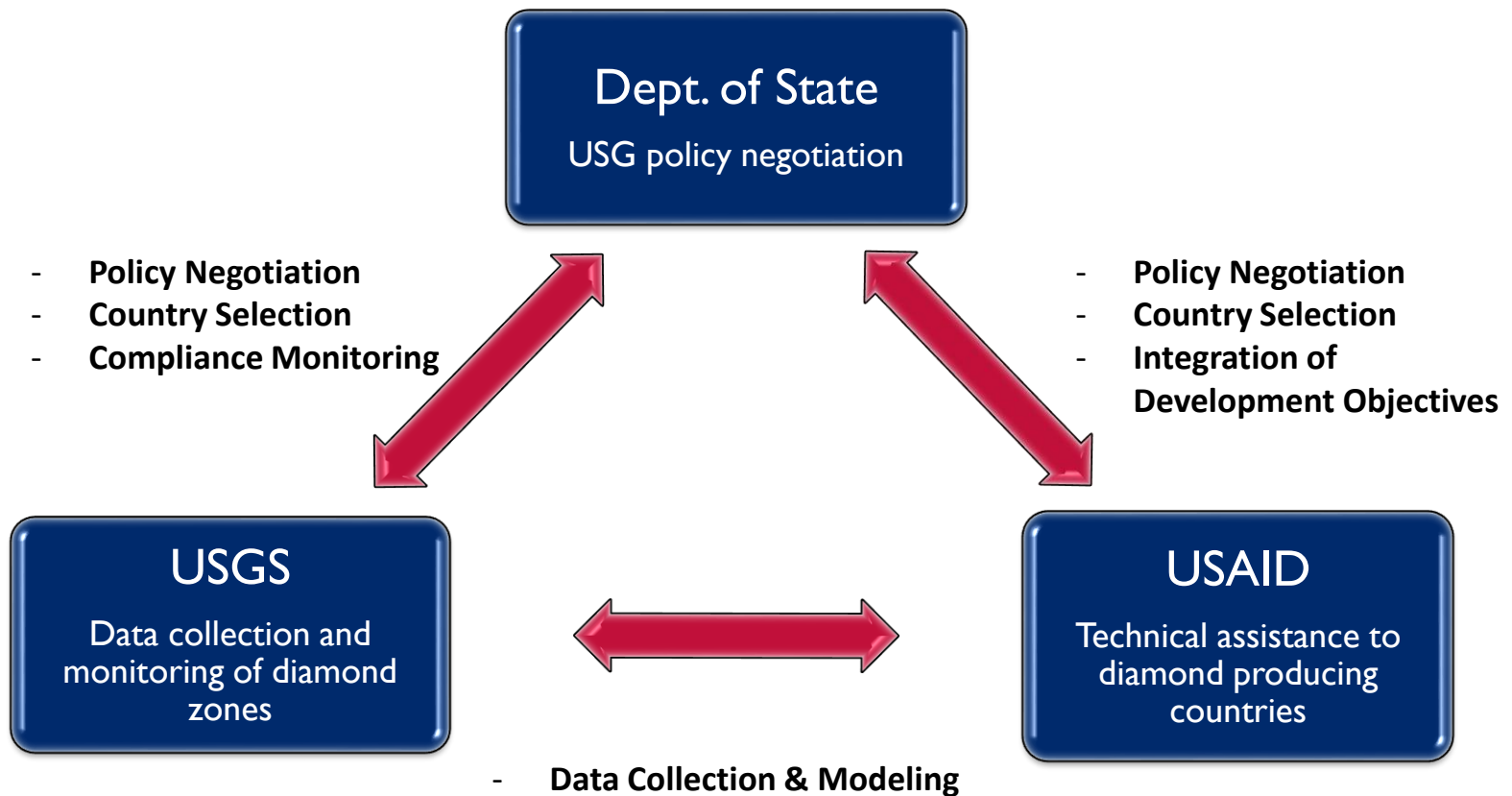
- Joint USAID/Dept. of State initiative to assist countries to comply with the Kimberly Process Certification Scheme (KPCS)
- Approximately \$2.5 million per year over 5 years
- Two objectives:
 - Increase the percentage of diamonds entering legal chain of custody
 - Increase the benefits from diamond mining that accrue to mining communities
- A key element of PRADD's approach is to clarify and strengthen property rights



USAID
FROM THE AMERICAN PEOPLE



Whole of Government Approach to KPCS





USAID
FROM THE AMERICAN PEOPLE



PRADD has Five Program Components





USAID
FROM THE AMERICAN PEOPLE



Property Rights Challenges in ASM Sector

- Competing tenure systems
- Poor legal protections
- Lack of clarity regarding surface and sub-surface rights
- Poor documentation and mapping of artisanal mining claims
- Overlapping boundaries





USAID
FROM THE AMERICAN PEOPLE



Impacts of Insecure Tenure on ASM

- Conflict
 - Artisanal miner vs. Artisanal miner
 - Artisanal miner vs. Local communities
 - Artisanal miner vs. Industrial-scale mining interests
 - Artisanal miner vs. Government
- Low investment
 - By miners
 - By local community
 - By outside financiers
- Environmental damage
- Difficulty in establishing mine-to-export traceability



USAID
FROM THE AMERICAN PEOPLE



Why focus on property rights of artisanal miners?

- Informs where diamonds are being extracted from
- Minimizes land and resource disputes
- Improves security of investments
- Encourages rehabilitation of mining sites
- Informs where proceeds from mineral exports should be reinvested





USAID
FROM THE AMERICAN PEOPLE



PRADD Property Rights Methodology

1

- Participatory rural appraisals

2

- Produce maps of land and related mining claims

3

- Stakeholder validation of claims

4

- Production of a geo-referenced database

5

- Issuance of property rights certificates

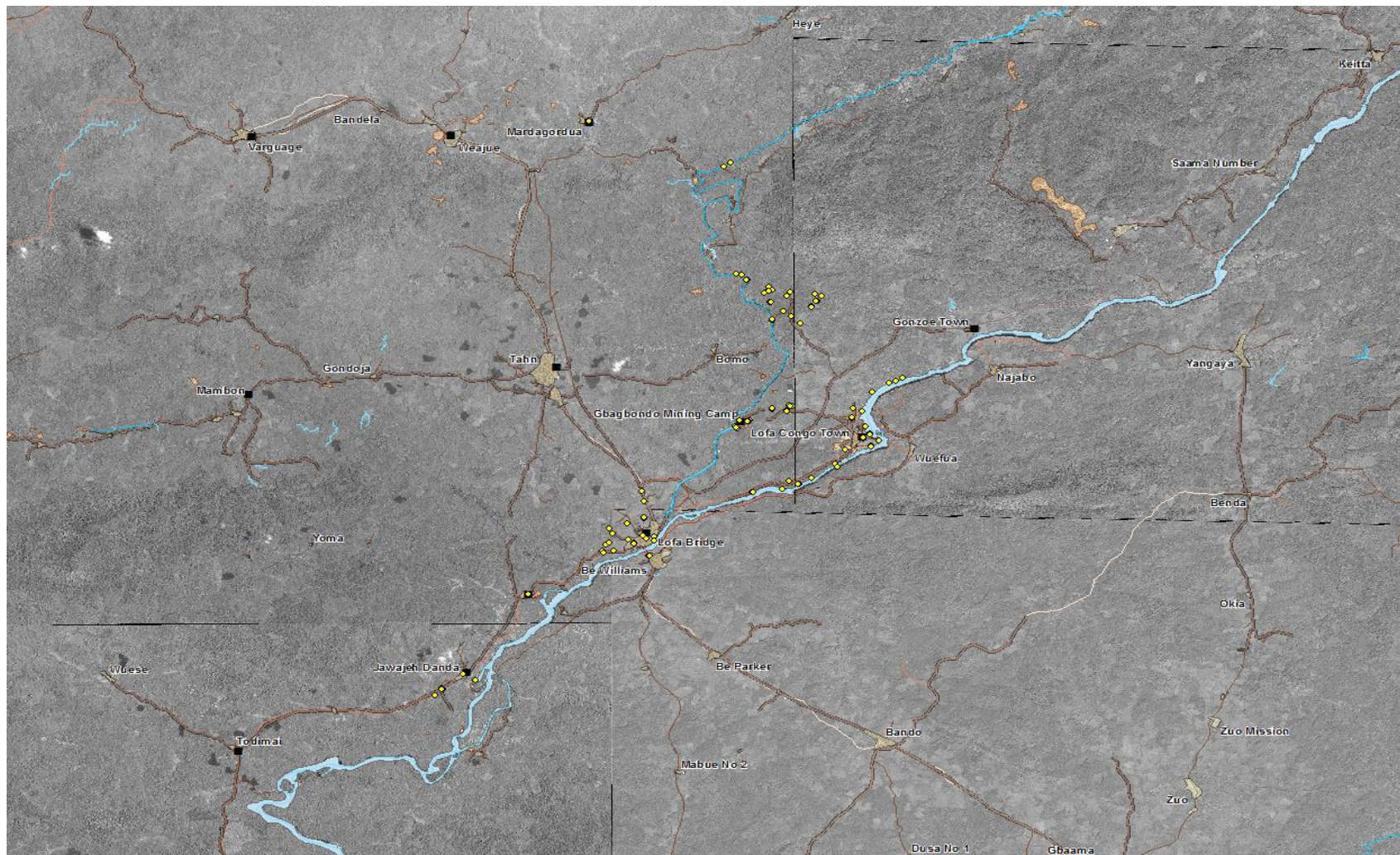




USAID
FROM THE AMERICAN PEOPLE



GIS Database/Artisanal Mining Cadaster





USAID
FROM THE AMERICAN PEOPLE



Other PRADD Activities

- Improve tracking of diamond production and sales
 - Artisanal mining cadaster
 - Legal and policy reform
- Alternative livelihoods & environmental rehabilitation
 - Introduction of alternative land uses on mine sites
 - Diamond valuation training & workrooms
 - Equipment rental pools
- Establishing direct supply chain with private sector
- Improve access and availability of information
 - Radio campaign and film



USAID
FROM THE AMERICAN PEOPLE



Alternative Livelihoods & Environmental Rehabilitation





USAID
FROM THE AMERICAN PEOPLE



Diamond Valuation





USAID
FROM THE AMERICAN PEOPLE



Equipment Rental Pools





USAID
FROM THE AMERICAN PEOPLE



Direct Supply Chain with Private Sector





USAID
FROM THE AMERICAN PEOPLE



Results from PRADD/CAR

- **3,871** “certificates of customary tenure” issued
- Mining-related conflicts reduced from **142** to only **4** – courts consulting PRADD database
- HH survey indicates increased perception of tenure security
- Over **650** mining sites rehabilitated
- Legal diamond production from PRADD’s intervention areas increased from **16,304** carats in 2010 to **74,824** in 2011





USAID
FROM THE AMERICAN PEOPLE



Future of PRADD

- 5-year (\$20 million) task order being prepared (2013 – 2018)
- Objective: Assist diamond producing countries with KP compliance while also improving livelihoods in ASM communities
- Country focus: Cote d'Ivoire, Guinea & possibly CAR
- Leverage Partnerships: European Union, Gemological Institute of America, and private sector





USAID
FROM THE AMERICAN PEOPLE



Elevating the Development Agenda

- Artisanal Mining and Development Conference - June 2012
- Adoption of Washington Declaration - November 2012
 - Endorsement of development principles and best practices
- Development of Washington Declaration Assessment Framework - 2013
 - Diagnostic tool to assess country status and progress towards principles and policies outlined in Washington Declaration



USAID
FROM THE AMERICAN PEOPLE



Thank you!

**For more information on USAID's Land Tenure and
Property Rights Portfolio Visit:**

<http://usaidlandtenure.net/>