



USAID
FROM THE AMERICAN PEOPLE

Property Rights and Artisanal Diamond Development (PRADD)

USAID's Project to Support the Kimberley Process

Tim Fella

Land Tenure and Conflict Advisor, USAID



USAID
FROM THE AMERICAN PEOPLE



Presentation Objectives:

1. Introduce USAID's PRADD project
2. Discuss property rights challenges in ASM sector
3. Explain how PRADD is addressing the challenges
4. Present overview of some of the PRADD results



USAID
FROM THE AMERICAN PEOPLE



Context, Objectives and Approach of PRADD

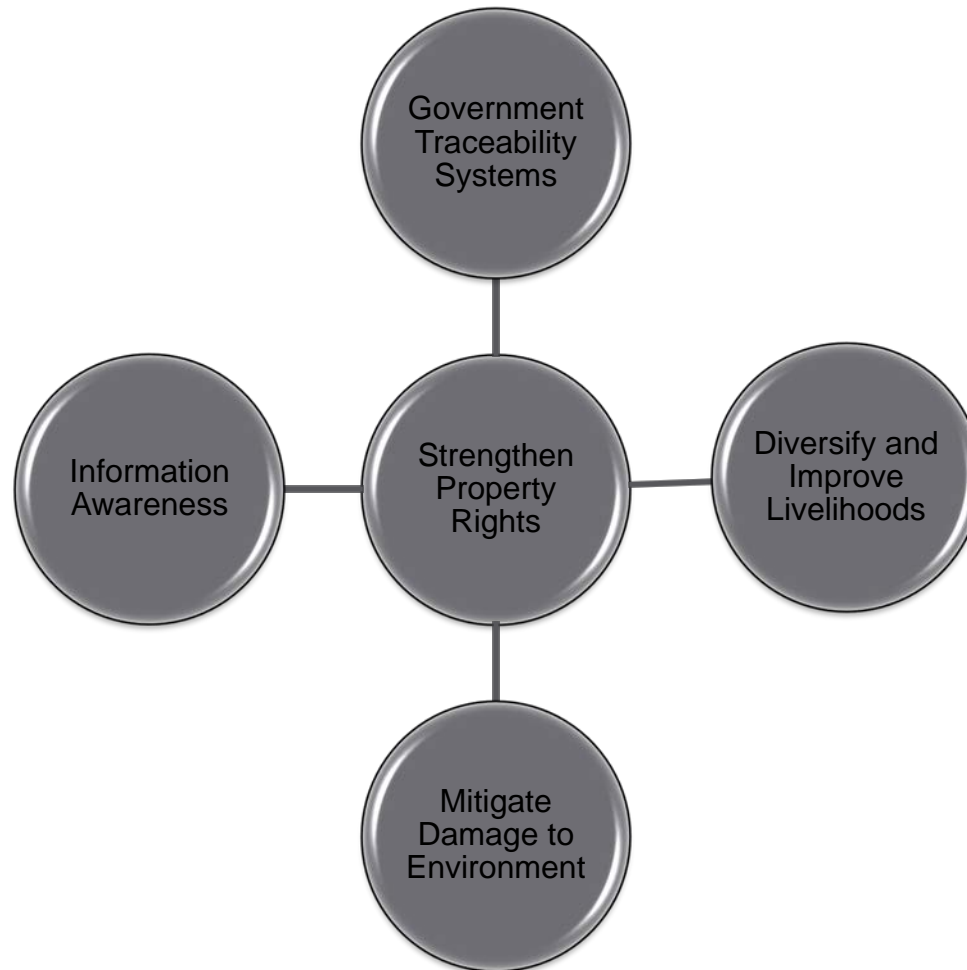
- Joint USAID/Dept. of State initiative to assist the Central African Republic and Liberia to comply with the Kimberly Process Certification Scheme (KPCS)
- Two objectives:
 - Increase the amount of artisanal diamonds entering the formal chain of custody
 - Increase the benefits from diamond mining that accrue to mining communities
- A key element of PRADD's approach is to clarify and strengthen property rights



USAID
FROM THE AMERICAN PEOPLE



PRADD has 5 program components





USAID
FROM THE AMERICAN PEOPLE



Property Rights Challenges in ASM Sector

- Competing tenure systems
- Poor legal protections
- Lack of clarity regarding surface and sub-surface rights
- Poor documentation and mapping of artisanal mining claims
- Overlapping boundaries





USAID
FROM THE AMERICAN PEOPLE



Impacts of Insecure Tenure on ASM

- Conflict
 - Artisanal miner vs. Artisanal miner
 - Artisanal miner vs. Industrial-scale mining interests
 - Artisanal miner vs. Government
- Low investment
 - By miners
 - By outside financiers
- Environmental damage
- Difficulty in establishing mine-to-export traceability



USAID
FROM THE AMERICAN PEOPLE



Why a focus on property rights of artisanal miners?

- Informs where diamonds are being extracted from
- Minimizes land and resource disputes
- Encourages rehabilitation of mining sites
- Improves security of investments
- Informs where proceeds from mineral exports should be reinvested





USAID
FROM THE AMERICAN PEOPLE



PRADD Property Rights Methodology

1

- Participatory rural appraisals

2

- Produce maps of land and related mining claims

3

- Stakeholder validation of claims

4

- Production of a geo-referenced database

5

- Issuance of property rights certificates

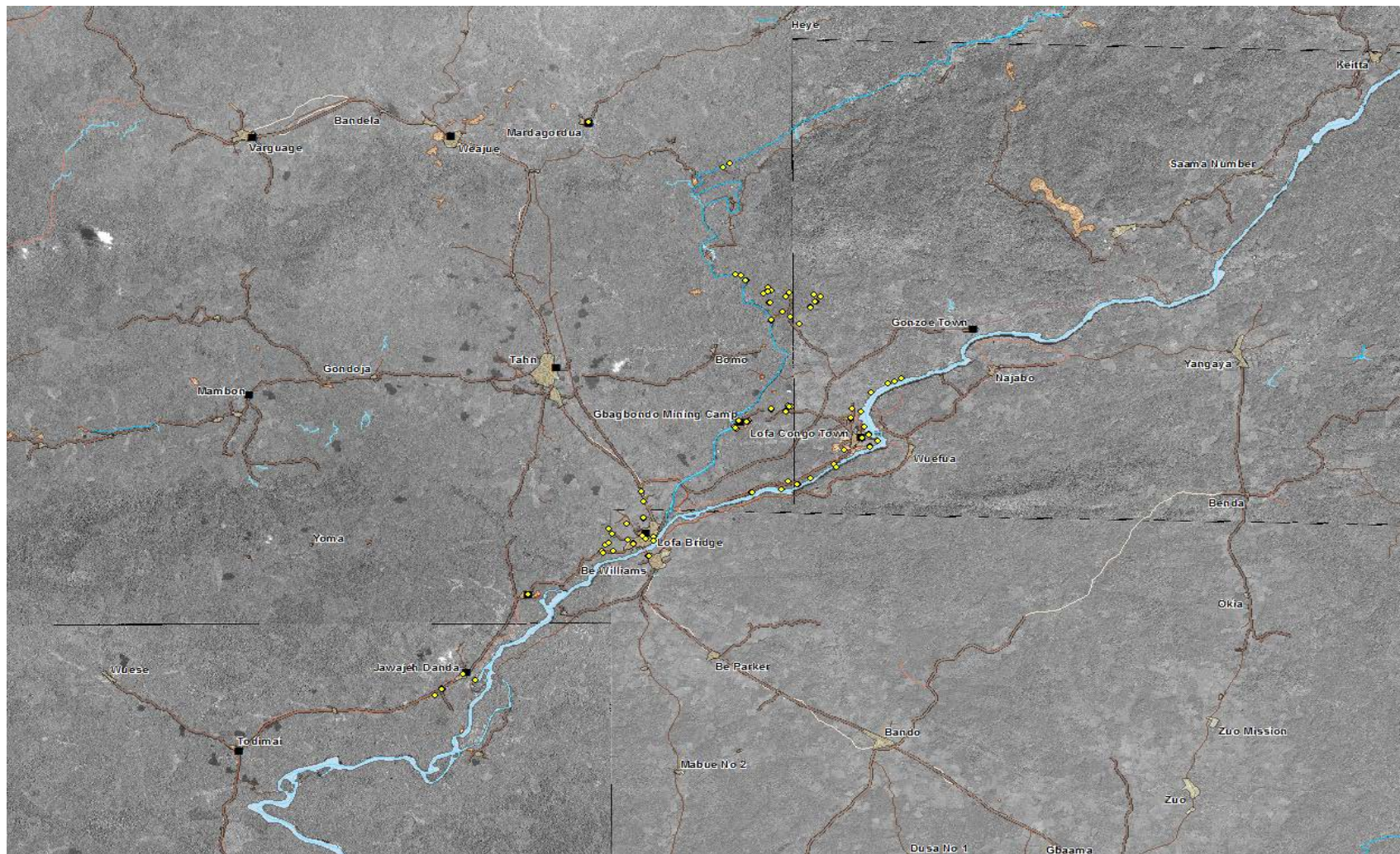




USAID
FROM THE AMERICAN PEOPLE



GIS Database

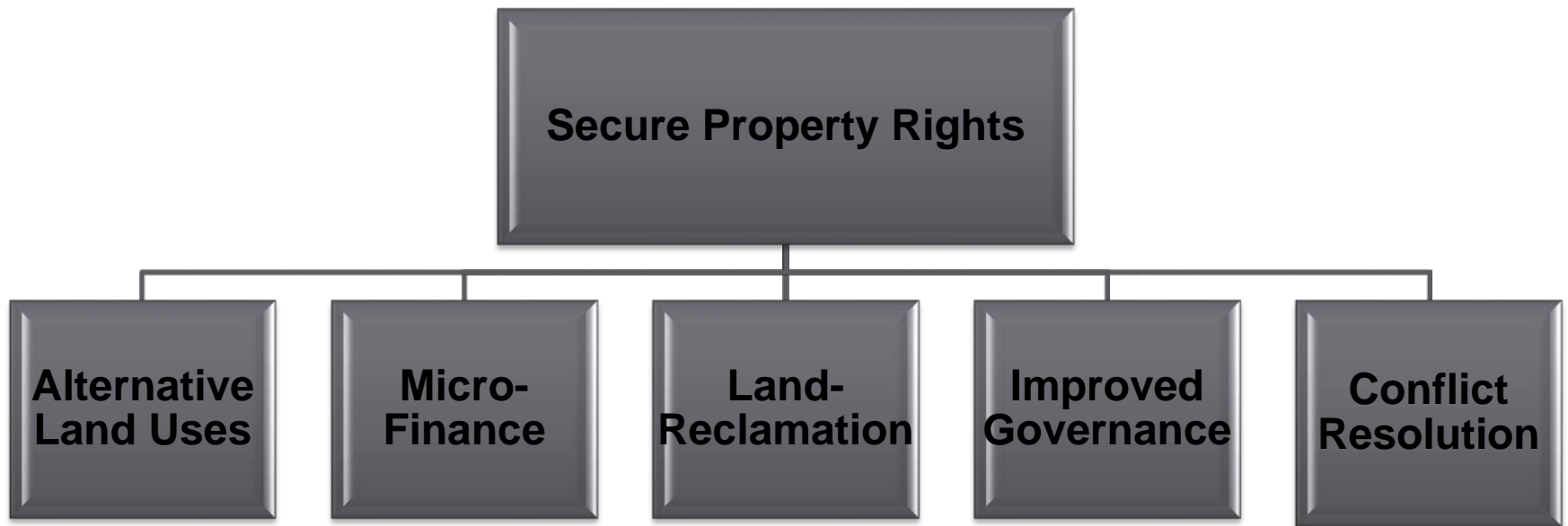




USAID
FROM THE AMERICAN PEOPLE



Secure Property Rights as Foundation for Other Development Activities





USAID
FROM THE AMERICAN PEOPLE



Results from PRADD/CAR

- **3,871** “certificates of customary tenure” issued
- Mining-related conflicts reduced from **142** to only **4** – courts consulting PRADD database
- HH survey indicates increased perception of tenure security
- Over **580** mining sites rehabilitated
- Legal diamond production from PRADD’s intervention areas increased from **16,304** carats in 2010 to **74,824** in 2011





USAID
FROM THE AMERICAN PEOPLE



Thank you!